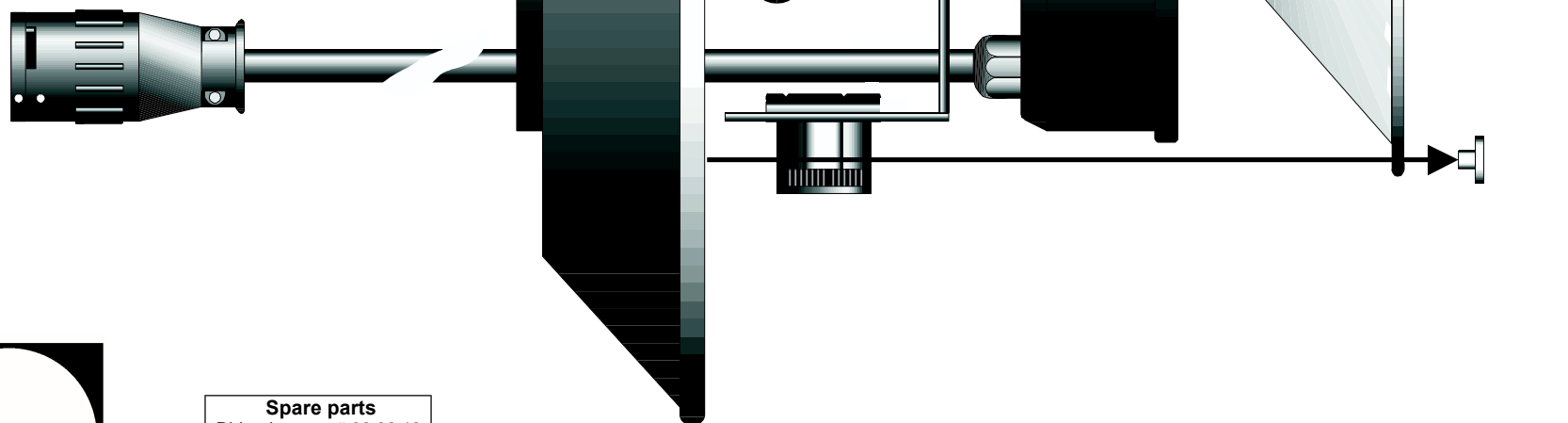


# Assembly instructions for RingFlash reflector

- 1) Remove the two ridged screws (A) fixating the camera holder (B)
- 2) Remove the four ridged nuts (C) holding the outer and inner reflectors together
- 3) Run the lamp cable through the outer reflector and let the reflector slide into position
- 4) Reassemble the outer and inner reflectors using the ridged nuts
- 5) Reassemble the camera holder using the two ridged screws



**Pro-7 ring &  
Acute ring**



Spare parts	
Ridged nut	# 62 88 12
Ridged screw	# 65 02 04
Nylon washer	# 62 97 05